

# BRNO – CITY OF UNIVERSITIES

Brno, the historical centre of Moravia, is the second largest city in the Czech Republic, with a population of almost 400,000. The life and atmosphere of Brno is deeply influenced by its institutes of higher education. (Six public universities with their 80,000 students – the highest concentration of students in any city in the Czech Republic).

South Moravia, where Brno is located, is a flourishing region attractive to tourists. Besides its many important national monuments and wine routes which wend their way through a beautiful landscape, the region offers a great variety of leisure-time activities.



# REASONABLE LIVING COSTS

As compared to other leading universities or Western European countries, the costs related to studying in the Czech Republic are relatively low. The estimate of the total annual costs of a student's life in Brno, including accommodation, meals etc., is 3,500–4,000 EUR.

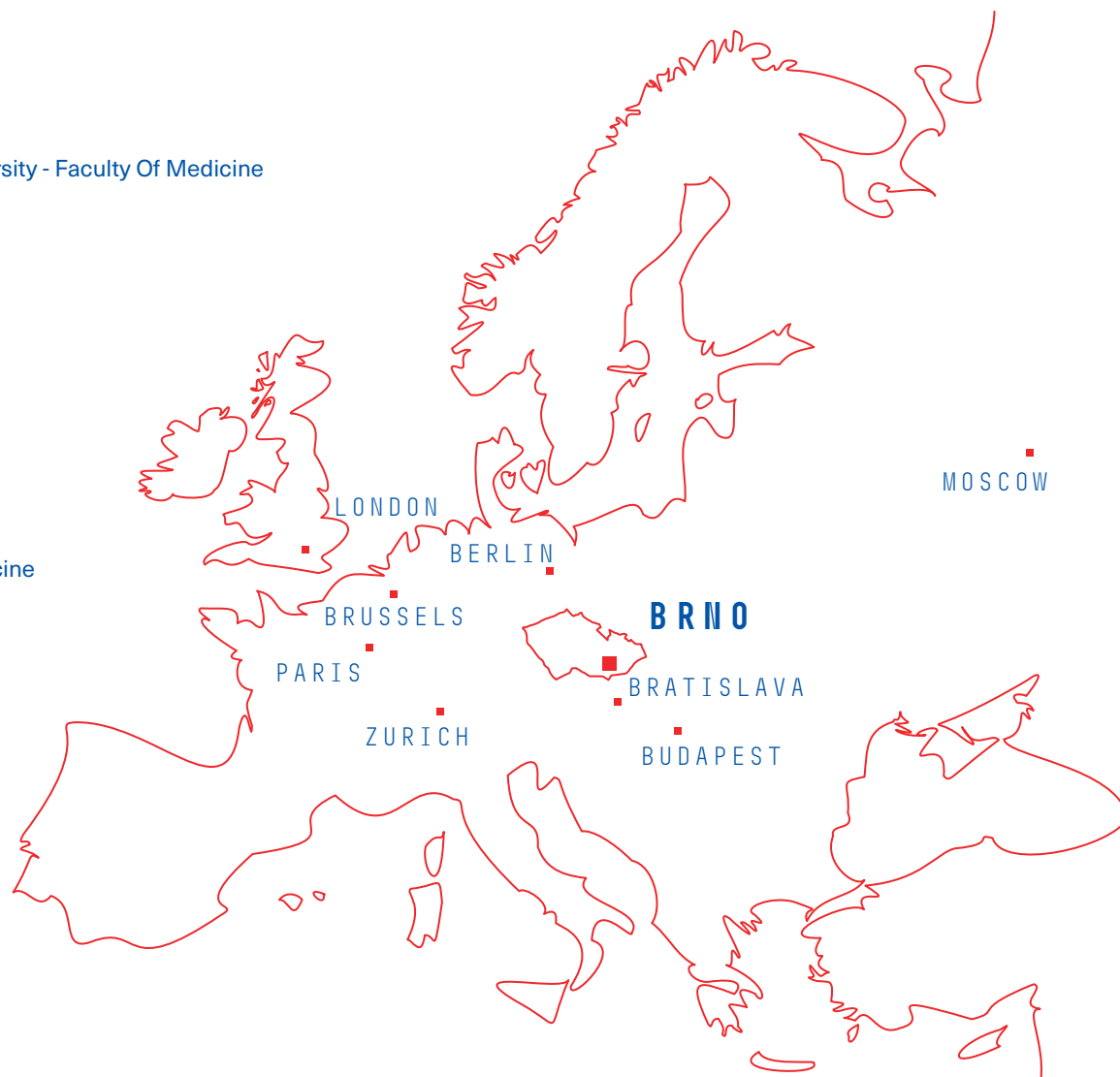
# JOIN US



Masaryk University - Faculty Of Medicine



masaryk\_medicine



**MASARYK UNIVERSITY | FACULTY OF MEDICINE**  
KAMENICE 753/5 | 625 00 BRNO | CZECH REPUBLIC  
+420 549 498 188 | [ADMISSION@MED.MUNI.CZ](mailto:ADMISSION@MED.MUNI.CZ)



MUNI  
MED

# Study Medicine in Brno

---

MASARYK UNIVERSITY  
FACULTY OF MEDICINE

---

Brno | Czech Republic | Central Europe

MED.MUNI.CZ/EN



# MASARYK UNIVERSITY

Masaryk University, located in Brno, the Czech Republic, was established in 1919, and with its ten faculties and more than 40,000 students is currently the second largest Czech university.

In recent years it has consistently attracted record numbers of applicants and has come to be recognized as one of the major Central European universities. One of the top priorities of Masaryk University is research.

The university places a strong accent on international cooperation with prestigious foreign universities and research institutions, and is a member of many important international associations.



# E-LEARNING PREPARATORY COURSES

Increase your chances of passing the entrance exam  
and study from the comfort of your home.

## **BIOLOGY CHEMISTRY PHYSICS**

Available from November to July

Cost € 100 per course



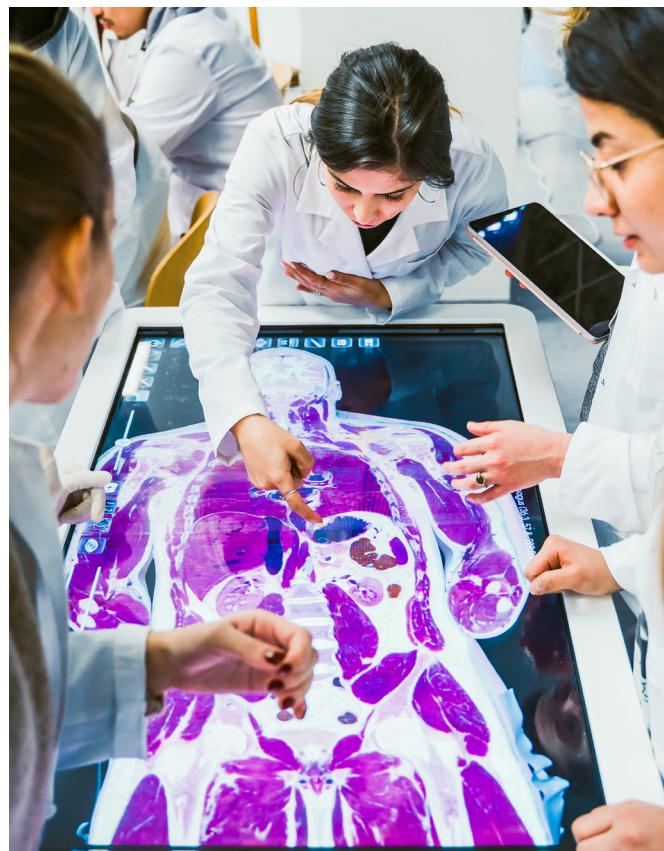
# FOUNDATION PROGRAM

Provides an excellent preparation for the Entrance  
exam and the first year of studies.

The course runs for 20 weeks  
in Brno (mid October to March).

## **TUTION FEES**

CZK 200,000 / approx. € 8,000





# INTERESTED IN STUDYING AT MASARYK UNIVERSITY?

We provide Master Degree Programs in English language in the fields of:

**General Medicine** (6 years)

**Dentistry** (5 years)

## TUITION FEES (PER ACADEMIC YEAR)

**General Medicine**

CZK 380,000 / approx. EUR 16,000 / USD 17,000

**Dentistry**

CZK 400,000 / approx. EUR 16,900 / USD 17,900

## ADMISSION INFORMATION

The examination exam consists of three written tests: **biology, chemistry, mathematics or physics.**

All the applicants need to contact one of our partner agency and sit the entrance examination in the respective countries.

For more details about admission:  
[admission@med.muni.cz](mailto:admission@med.muni.cz)

For information  
about accommodation:  
[www.skm.muni.cz](http://www.skm.muni.cz)

